

[Home](#) ■ [Products](#) ■ [Grit Separation and Treatment](#) ■ [System Components](#) ■ [HUBER Wash Drum RoSF9](#)

## HUBER Wash Drum RoSF9



Efficient and reliable coarse material separation:

- Grit from WWTPs and sewer systems
- Road refuse and oil grit
- Septic sludge
- Industrial applications
- Homogenisation of the material to be processed

- Break-up of big agglomerates in the material
- Washout of all material < 10 mm
- Clean material after coarse material washing
- Self-cleaning screen drum
- Different screen perforations available
- A frequency converter allows for different rotation speeds

While wash water is added to pre-wash and homogenise the raw material within the HUBER Wash Drum in RoSF9 version, the perforated plate of the Wash Drum retains all particles > 10 mm, which are dewatered and then discharged into a skip. Since only coarse material > 10 mm is separated, the volume of the resultant residues is vastly reduced.

Virtually the complete mineral material being further treated in the down-stream [COANDA Grit Washer](#). The resultant coarse material can then be further separated into a mineral and organic fraction by means of a coarse material washer.

The Wash Drum is also available as [Sludge Acceptance Plant RoFAS](#) version.

## Benefits

### ADVANTAGES OF HUBER WASH DRUM ROSF9

- High solids throughput even with problematic material (tresses, grease, stones)
- High hydraulic capacity even with high solids contents
- High yield by coarse material washing
- Defined separation size due to two-dimensional screening
- Feeding from a conveyor, through a launder channel or pressure line
- Completely encased unit
- Insensitive to coarse material
- 3 to 100 mm separation size
- Fully automatic cleaning of the perforated plate
- Screened wastewater can be used as wash water
- Short tanker vehicle emptying times
- Optional simultaneous emptying of several vehicles
- Minimum wear, reduced maintenance
- Compact, space-saving design
- Low energy demand
- Adjustable rotary drum speed
- Manufactured entirely of stainless steel

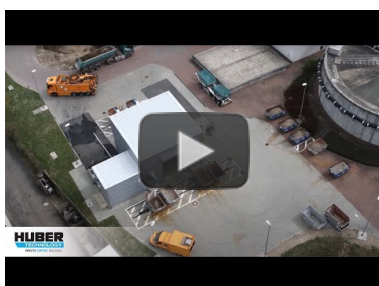
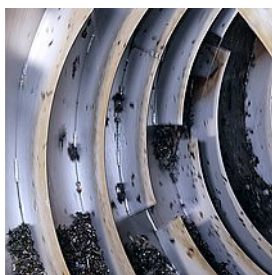
## Downloads

 [Brochure: HUBER Wash Drum RoSF9 / Sludge Acceptance Plant RoFAS](#) [pdf, 196 KB]

## Case Studies

- [Grit Recycling at the Largest German WWTP](#)
- [HUBER Grit Treatment System RoSF5 in the waste management industry](#)
- [Professional treatment of sewer grit](#)
- [Reliable grit treatment with the use of HUBER machines](#)
- [First complete treatment plant for sewer grit installed in China](#)
- [New plant in Switzerland for innovative sewer grit treatment with process water recycling](#)
- [Ideal synergies of ecology and economy: smart HUBER solutions for grit processing in the waste management industry](#)

## Media



Video: HUBER ROTAMAT® Wash Drum RoSF9 in a grit treatment process for coarse material separation

<https://www.youtube.com/watch?v=ZVP2aWdm9AE>



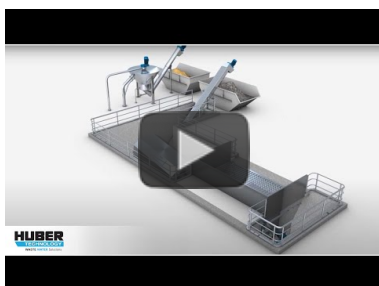
Video: HUBER ROTAMAT® Wash Drum RoSF 9 in a grit treatment process for coarse material separation

<https://www.youtube.com/watch?v=SpqlkL361Sc>



Video: HUBER ROTAMAT® Wash Drum RoSF9 in a grit treatment process for coarse material separation

<https://www.youtube.com/watch?v=a2fl9eGOEsk>



Animation: HUBER Wash Drum RoSF9

<https://www.youtube.com/watch?v=MGrAG0bs4xQ>

## More products of this group: System Components

- [HUBER Coarse Material Washer RoSF13](#)

HUBER Technology, Inc.

1009 Airlie Parkway  
Denver, NC 28037

Phone: (704) 949-1010

Fax: (704) 949-1020

[huber@hhusa.net](mailto:huber@hhusa.net)

<http://www.huber-technology.com>

**A member of the HUBER Group**