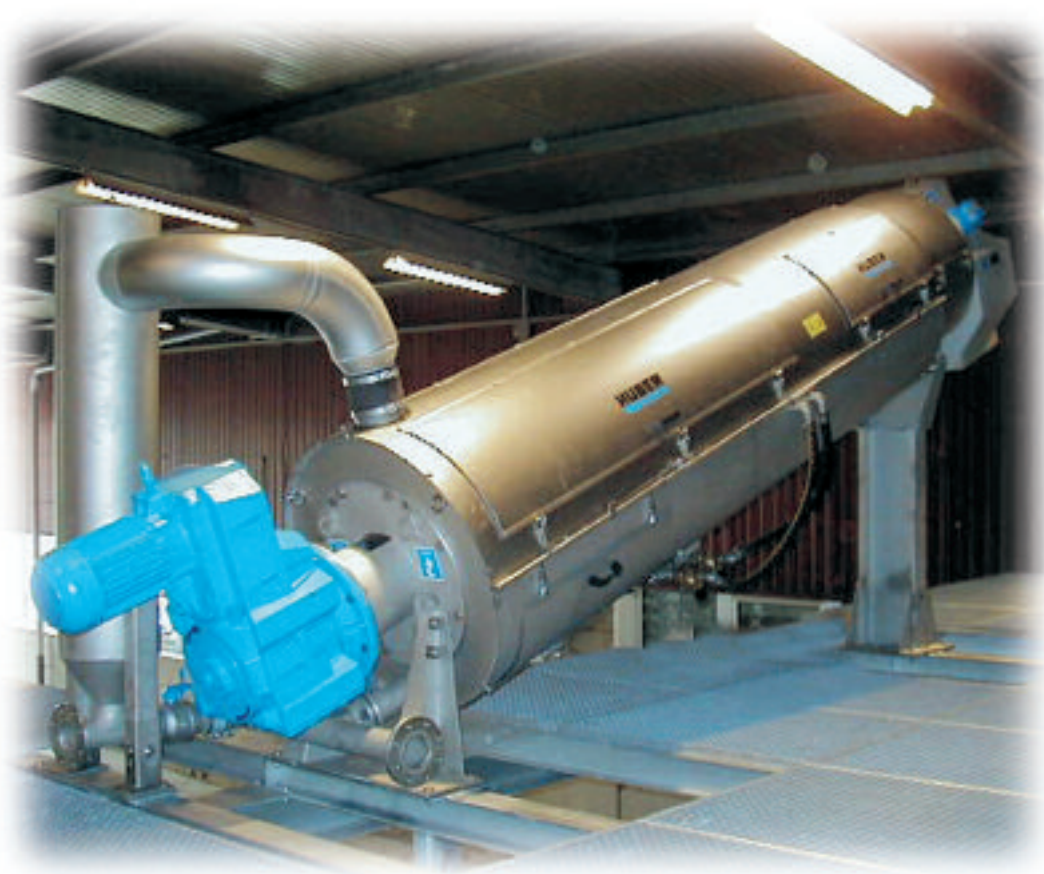


ROTAMAT® Screw Press RoS 3



Screw Press for the dewatering of municipal and industrial sludge

- Compact and entirely enclosed machine
- Efficient and reliable operation with minimum operator attendance
- Low operating costs
- Long life, made of stainless steel



►► Features

Liquid sludge is pumped to the flocculation reactor of the screw press. A polymer station prepares a polymer solution from powder or liquid polymer. The diluted polymer is introduced through a dosing ring in the feed sludge line, and is intensively mixed with the sludge in a static inline mixer.

Strong sludge flocs are formed in the flocculation reactor, wherefrom the flocculated sludge overflows into up to three screw presses.

The screw press comprises of an inclined wedge section basket with a 0.01" (0.25 mm) spacing. A slowly rotating screw, with variable speed, conveys the sludge slowly upwards through the inclined basket. The screw flights are provided with brushes for continuous internal cleaning of the wedge section basket. Periodically the wedge section basket is also cleaned from the outside with spray water. Spray bars rotate around the basket, but within the machine.

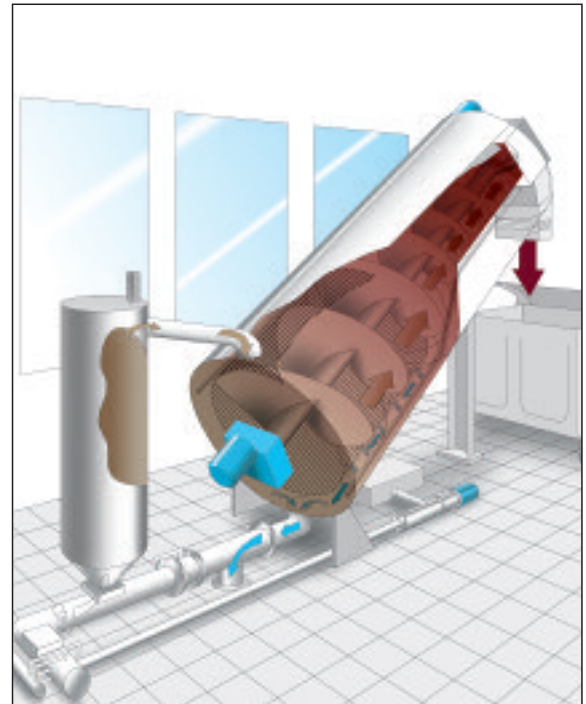
A lower wider section of the basket serves as pre-dewatering zone where free water drains by gravity. A second section of the basket with a smaller diameter serves as pressure zone. Here the sludge is compressed between narrowing flights of the screw. The pressure in the pressure zone is controlled by the position of a cone at the discharge end of the basket. The dewatered sludge is driven through the gap between the cone and the basket and drops as sludge cake on a conveyor or directly into a dumpster. Two or three screw presses can be installed in parallel, with a single sludge feed pump, polymer station and flocculation reactor.

►► Performance

- Cake solids: 20 to 25 %*
- Hydraulic capacity: 45 gpm (10 m³/h)**
- Solids capacity: 600 lb/h (275 kg/h)**
- Solids capture rate: > 95%
- Polymer consumption: 8 to 12 lbs/ton (4 to 6 kg/t)*
- Wash water consumption: < 98 gph (370 l/h) **
- Power consumption: < 1.5 kW**

* common municipal wastewater sludge

** per screw press



►► Benefits

- Coarse material does not impair the machine and its operation
- Fully enclosed system prevents odor nuisance and health & safety hazards
- No noise, no vibration
- No need for wash-down
- Little operator attendance due to automatic operation
- Low power, polymer and wash water consumptions
- Low operating costs
- Low wear and maintenance
- Made of stainless steel, pickled in an acid bath

HUBER TECHNOLOGY, Inc.

9805 NorthCross Center Ct.
Suite H
Huntersville, NC 28078

Phone: (704) 949 - 1010

Fax: (704) 949 - 1020

huber@hhusa.net

<http://www.huber-technology.com>

Subject to technical modification

ROTAMAT®
Screw Press RoS 3