

# ROTAMAT®

## Rotary Drum Fine Screen Ro 2



Rotating cylindrical fine screen

- with integrated screenings press
- with integrated screenings washing
- with frost protection (optional)
- thousands of installations



## ►► Applications

- municipal wastewater
- industrial wastewater
- process water
- drinking water intakes

## ►► Features

The ROTAMAT® Rotary Drum Fine Screen Ro 2 is either installed in a channel or supplied in a tank.

It performs the functions of fine screening, conveying, washing, dewatering, compaction, and bagging on a small footprint and with a single drive.

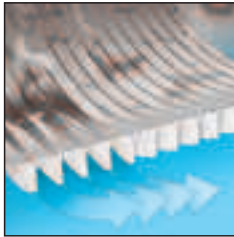
Water or wastewater flows through the open front into the inclined screen basket and then through the screen. Debris and other solids are retained within the screen basket. Carry-over of screenings cannot occur.

A screenings mat forms on the face of the screen. Solids that could pass the clean screen are retained by the screenings mat. This filtering effect of the screenings mat further improves the screen's capture rate.

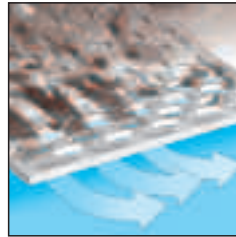
When the upstream water level reaches a certain height, a cleaning cycle starts and the screen basket begins to rotate. Screen surface that is covered with a screenings mat is replaced with clean screen surface. When the screenings reach the 12 o' clock position, they are cleaned off the screen by the combined action of a spray bar and a brush. They drop down into a screenings hopper.

The screw and the screen basket are driven by the same motor. The inclined screw pushes the screenings through an auger tube, where they are subsequently washed (optional), dewatered and compacted, before they drop through a chute into a container or bag. Odor emission is minimal particularly where a bagger is provided.

**Wedge wire with  
≥ 0.5 mm (0.02")  
spacing**



**Perforated plate with  
≥ 2 mm (0.08")  
diameter**



**(Woven mesh wire basket  
< 2 mm (0.08") also available as  
HUBER ROTAMAT® Membrane  
Screen RoMem)**



## ►► Integrated Screenings Washing (IRGA)

A spray bar is installed directly above the screenings hopper. Three additional spray nozzles are installed around the auger tube. The screenings are washed before and while they enter the auger tube. Wash water drains back into the hopper and screen basket. Retrofitting any type of ROTAMAT® screen with an integrated screenings wash system (IRGA) is easily possible.

Good washing of screenings provides several benefits:

- Removal of fecal matter from the screenings
- Carbon in fecal matter remains available for denitrification processes
- Reduced health and safety concerns
- Improved screenings compaction to about 40 % DS
- Volume, weight and disposal cost reduction by about 50 %



*Four ROTAMAT® Rotary Drum Fine Screens provided with integrated screenings washing (IRGA)*

## ►► Benefits

### ► **Multi-functional and compact unit**

A single unit with a small footprint and a single drive performs many functions: The screenings are simultaneously retained, removed, conveyed, washed (optional), dewatered, compacted and bagged (optional)

### ► **Excellent capture rate**

Selection of fine wedge wire spacing or small perforations permits excellent capture rate

### ► **Low head loss even at high flow**

Due to the basket's shape and 35° inclination, the screen area is much larger than that of a vertical or steeply inclined conventional screen

### ► **High screenings load**

High screenings removal capacity due to the possibility of continuous rotation and cleaning of the screen basket

### ► **Reliable, self-cleansing operation**

Screen cleaning with spray bar and brush

### ► **No carry-over of screenings**

Removed screenings remain within the rotating basket

### ► **Disposal cost savings**

Volume, weight and disposal costs of the screenings are reduced by about 50 % after screenings washing (IRGA)

### ► **No odor nuisance**

A fully enclosed unit, equipped with a bagger, operates virtually odorless

### ► **Easy operation and maintenance**

Maintenance-free ceramic shaft bearing; regular checking of controls and visual inspection are sufficient

### ► **Outdoor installation**

Optional frost-protection for outdoor installation

### ► **Long life**

Made of stainless steel, pickled in an acid bath for perfect finishing and corrosion protection

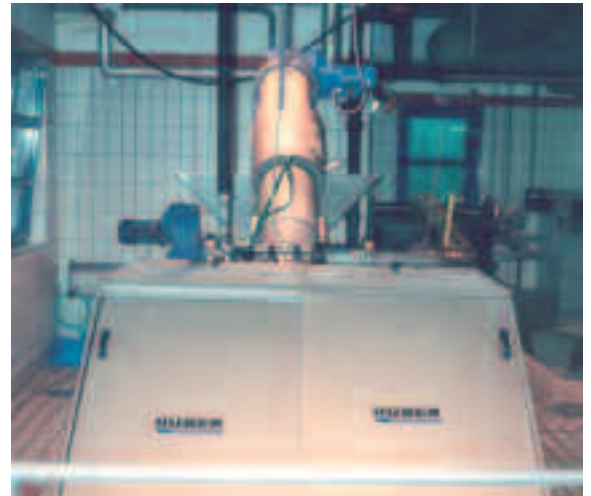
### ► **Experience**

Thousands of installations

➤➤ A few Examples  
from Thousands of Installations



*ROTAMAT® Rotary Drum Fine Screens Ro 2, directly installed in channels; available with basket diameters from 2 to 10 ft (0.6 to 3 m)*



*Large ROTAMAT® Rotary Drum Fine Screen Ro 2 installed in a channel and enclosed with sliding access covers*



*Tank-mounted ROTAMAT® Rotary Drum Fine Screen Ro 2 ...*



*... available with basket diameters from 2 to 8 ft (0.6 to 2.4 m)*

➤➤ Screen Sizes

Wedge wire spacing: 0.02" to 1/4" (0.5 to 6 mm)

Perforation diameter: 0.08" to 1/4" (2 to 6 mm)

Perforated plate basket: < 2 mm (0.08") also available as HUBER ROTAMAT® Membrane Screen RoMem)

Screen basket diameter: 2' to 10' (600 to 3,000 mm)

Inclination: 35°

**HUBER TECHNOLOGY, Inc.**

9805 NorthCross Center Ct.  
Suite H  
Huntersville, NC 28078

Phone: (704) 949 - 1010

Fax: (704) 949 - 1020

huber@hhusa.net

<http://www.huber-technology.com>

Subject to technical modification

**ROTAMAT®-**  
**Rotary Drum Fine**  
**Screen Ro 2**